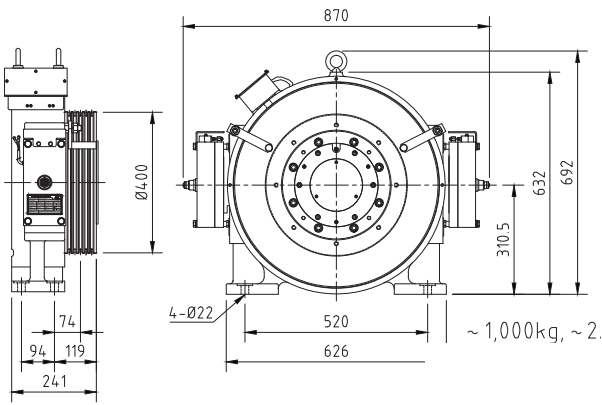
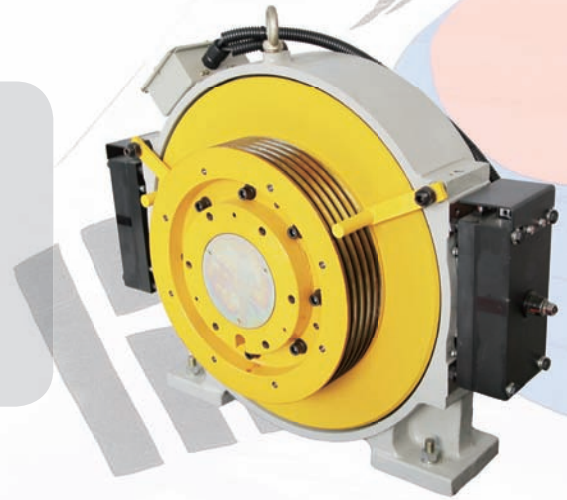
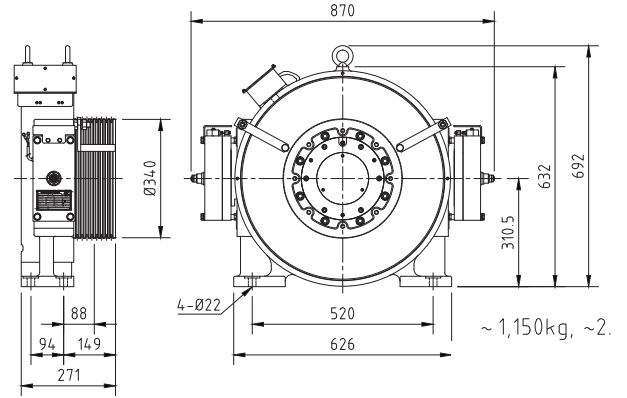


TK035

- Usage MR, MRL
- Rated Load ~1,200kg(2:1)
- Elevator Speed ~2.0m/s
- Max Shaft Load 3,500kg
- Brake REB31 DC110V/70V
- Weight 360kg



▲ ~ 1,000kg, 2.0m/s (2:1)



▲ ~ 1,200kg, 2.0m/s (2:1)

모델명 Model No.	속도 Speed (m/s)	정격하중 Rated load (kg)	시브 직경 Sheave Dia. (mm)	로프경 x 본수 Rope Dia. x QTY (Max.)	출력 Output (kW)	회전수 (rpm)	주파수 Frequency (Hz)	정격토크 Rated Torque (N·m)	정격전압 Voltage (V)	전류 Current (A)	로핑 Ropping	극수 Poles	절연등급 Insulation Class										
TK035-044	1.00	700	400	Φ10x5	4.4	96	25.5	439	266	13.5	2:1	32	F										
TK035-065	1.50				6.5	143	38.2	432	238	21.9													
TK035-077	1.75				7.7	167	44.6	441	278	22.5													
TK035-089	2.00	8.9			191	51.0	445	278	26.0														
TK035-047	1.00	750			400	Φ10x5	4.7	96	25.5	469				272	14.5	2:1	32	F					
TK035-070	1.50						7.0	143	38.2	467				244	23.7								
TK035-082	1.75						8.2	167	44.6	468				284	23.9								
TK035-095	2.00	9.5					191	51.0	475	284				27.8									
TK035-056	1.00	900					400	Φ10x5	5.6	96				25.5	558				274	16.1	2:1	32	F
TK035-085	1.50								8.5	143				38.2	564				245	27.0			
TK035-099	1.75								9.9	167				44.6	565				285	27.1			
TK035-113	2.00	11.3							191	51.0				564	281				31.3				
TK035-062	1.00	1000	400	Φ10x5					6.2	96	25.5	619	283	17.9	2:1				32	F			
TK035-094	1.50								9.4	143	38.2	626	253	29.9									
TK035-110	1.75								11.0	167	44.6	628	294	30.1									
TK035-125	2.00	12.5							191	51.0	624	290	34.7										
TK035-072	1.00	1150			340	Φ8x8			7.2	112	30.0	612	290	20.1		2:1	32	F					
TK035-108	1.50								10.8	169	45.0	612	251	34.4									
TK035-126	1.75								12.6	197	52.5	612	292	34.5									
TK035-144	2.00	14.4							225	60.0	612	295	39.1										
TK035-076	1.00	1200					340	Φ8x8	7.6	112	30.0	648	296	21.1							2:1	32	F
TK035-114	1.50								11.4	169	45.0	645	256	36.3									
TK035-133	1.75								13.3	197	52.5	645	297	36.5									
TK035-152	2.00	15.2							225	60.0	645	301	41.3										